

Company Profile

HIRAI SEIMITSU CORP

<http://www.hiraiseimitsu.com>

Company History (1)

- December, 1970** Established Hirai Seimitsu Corp.
- November, 1977** Established Gifu Factory
- January, 1982** Opened Sendai Branch
- January, 1985** Established Yamagata Factory
- October, 1986** Opened Nagano Branch
- February, 1987** Established Yamagata Hirai Seimitsu Corp as self-supporting company.
- December, 1989** Established Gifu Hirai Seimitsu Corp as self-supporting company
- January, 1990** Opened Los Angeles Office
- October, 1991** Established Mackin Industries Corp.
- June, 1994** Opened New Jersey office of Mackin Industries Corp.
- January, 1996** Opened Osaka Branch

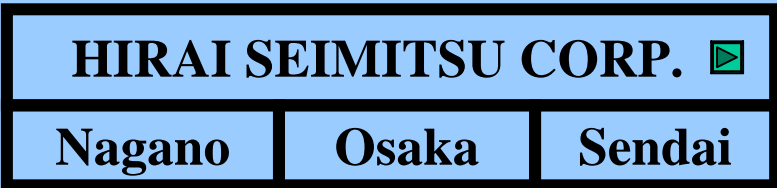
Company History (2)

- May , 2001 Opened London Mackin Technologies UK Ltd
Closed New Jersey Office**
- January , 2002 Changed Factory Name From Gifu Hirai to
Agile Technologies Corporation**
- November, 2002 Opened Shanghai Office (Rep Office)**
- March , 2003 The Shanghai office was authorized as
independent corporation.
Mackin Technologies Shanghai started**
- November, 2003 Agile Technologies merged with
Yamagata Hirai Seimitsu Corp**

HIRAI GROUP

Capital US\$ 920,000

Employees 35



Capital US \$890,000

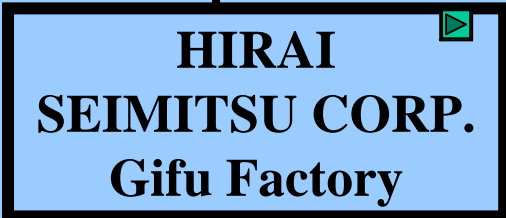
Employees 350



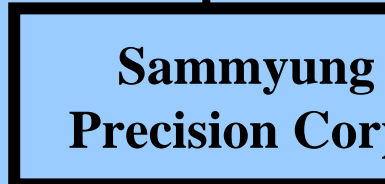
Capital US\$ 400,000
Employees 5



Capital US\$ 3,000,000
Employees 135



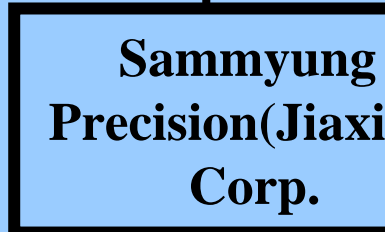
Capital \$1,600,000
Employees 248



Capital US\$ 2,200,000
Employees 100



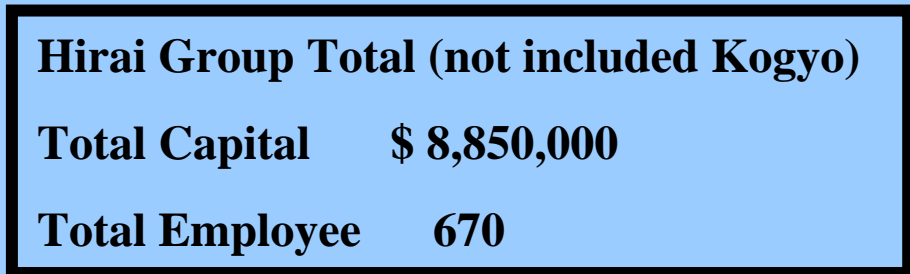
Capital US\$ 200,000
Employee 5



Capital US\$ 370,000
Employees 140



Capital US\$ 160,000



Hirai Seimitsu Corp.

Head Office (Tokyo)

Capital US\$ 920,000

Employees 35

Sales Offices:

Osaka

Sendai

Nagano



Mackin Tech Inc. U.S.A

Capital US\$ 400,000



Head Office (L.A)

London Office (UK)

Shanghai Office (CHINA)

Mackin Technologies Shanghai



Capital US\$ 200,000

HIRAI SEIMITSU Corp. Gifu Factory

Capital \$1,600,000

Employees : 248

Technical : 15 MFG : 96

QA : 16 Ceramic : 8

Balance(PL) : 94

Site : 16,266 m²

Building : 12,418 m²

Products

GTMS PRODUCTS(Case&Sten) Xs

CERAMICS

PLATING (Au,Ag,Tin, Ni, Solder)

MACHINING

Quality Control



Hermetic Sealed Products For Optical Semiconductors



Manufactured at Gifu Factory & Summyung Precision China

MAIN CUSTOMERS

Arna Devices Inc

Kawada Electric Industry

Uniphase Corp.

ent Technologies

)

Hitomo Electric Industries

rs

Caps



TO Headers



High Speed Package



Mini Package



Glass To Metal Sealed Packages For Crystal Oscillators



Manufactured at Gifu factory and Sammyung
Precision China (Jiaxing,China)

APPLICATION

Computer, Radio

Clock , Telephone, Others

MAIN CUSTOMERS

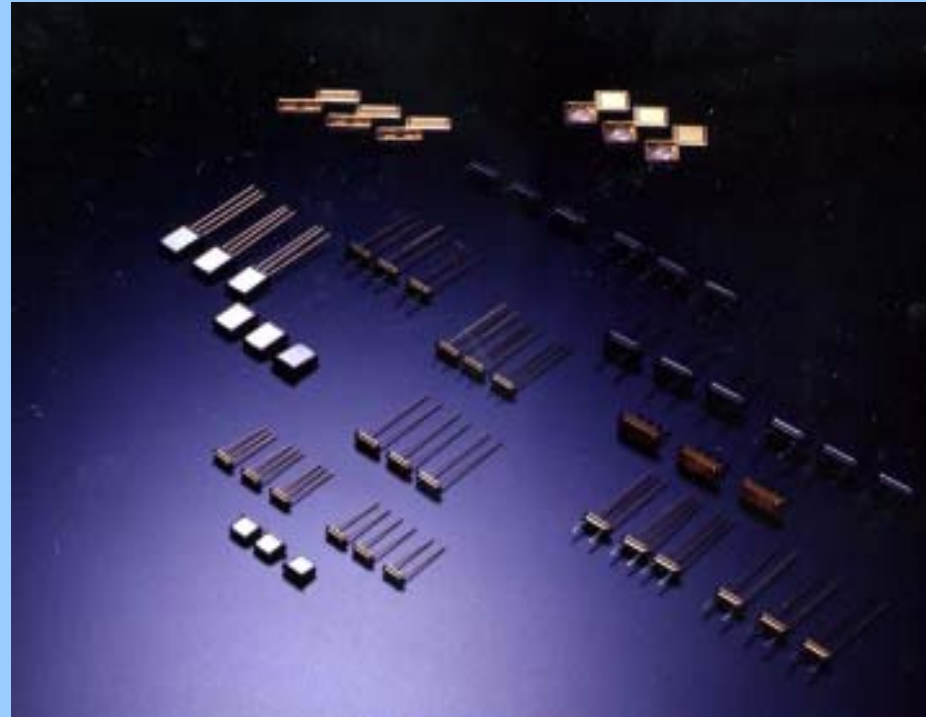
Tokyo Denpa Co., Ltd

Hinseki Co., Ltd

Nippon Communication Co.,Ltd

TS (Motorola)

Others



ating(Au,Ag,Tin,Ni, Solder,etc)



manufacture at Gifu and Yamagata factory



AIN CUSTOMERS

Subsidiary of Mitsubishi Shindou Co., Ltd

Mitsubishi Electric Metex Corp

Fujikawa Electric Industry

Seiko Co., Ltd

Yamaha Metanics

Others

APPLICATIONS

-Connector

-Terminals for

Automobile

-Buttery Case

-Semiconductor

Terminal

Others



Co-Fire Multi Layer Ceramics



Manufacture at Gifu factory

Standard Design Guideline :

Hole Size : 0.20mm Min

Drill Pitch : 0.20mm Min

Drill Width : 0.10mm Min

Thickness Of 1 Layer : 0.254mm Min

0.635mm Max

Alumina Contents (Al_2O_3)

Single Layer : 90%, 93%, 96%, 99%

Multilayer : 90%, 93%

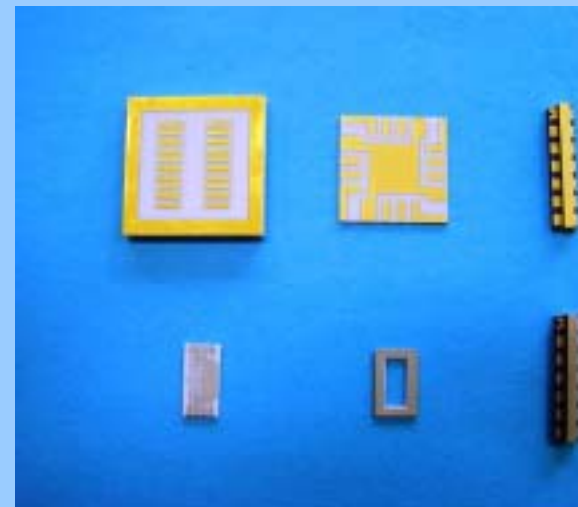
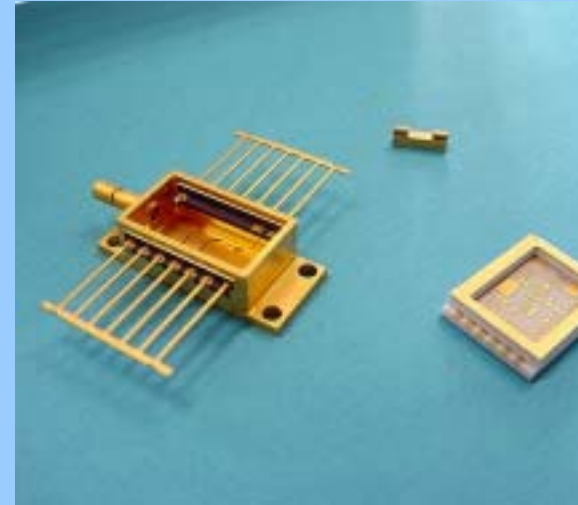
OR

Alumina : 90%

Alumina : 93%, 96%, 99%

APPLICATIONS

- Intergraded Package
- Optical Fiber System
- MEMS Sensor
- RF connector
- Others



HIRAI SEIMITSU Corp. Yamagata Factory



Total : US\$ 3,000,000

Products : Plating

Employees : 130

:18,800 m²

ding : 7,787 m²



Sammyung Precision (Jiaxing) Corp.

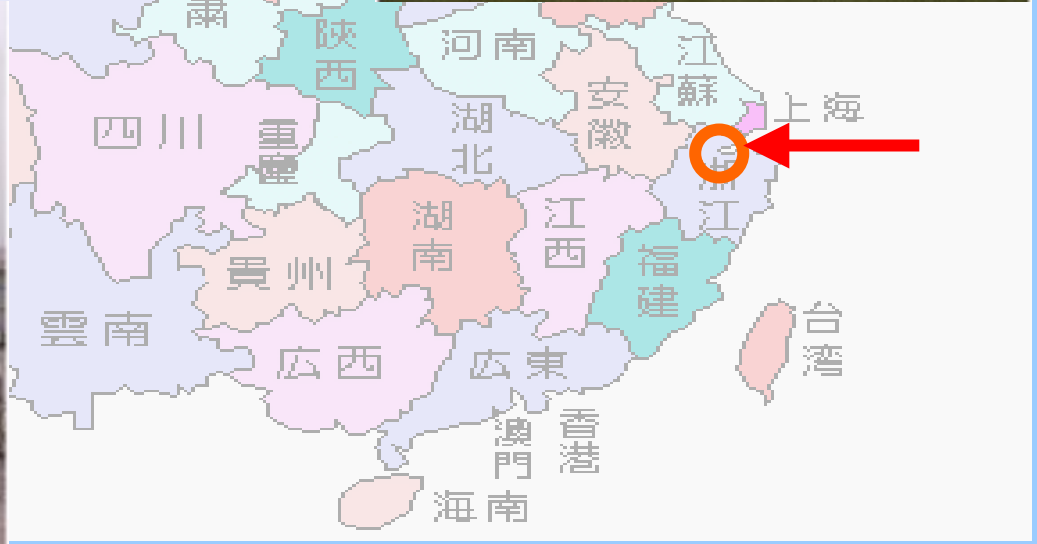
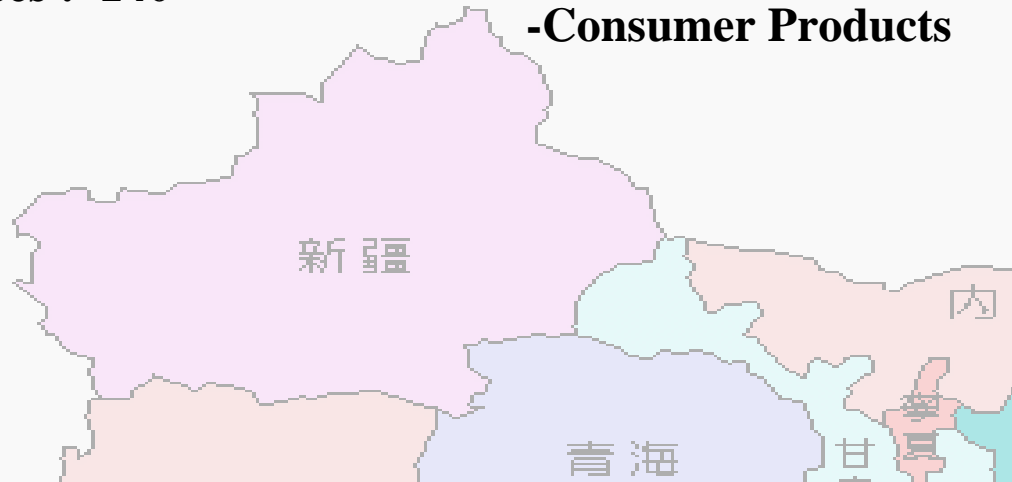
Zhejiang Province, China



Capital : US\$ 3.7million
Employees : 140

Products

- Crystal Oscillators
- Consumer Products



THANK YOU VERY MUCH FOR
YOUR KIND ATTENTION.

HIRAI SEIMITSU CORPORATION